

## HAT TRICK LAUNCH

# آسان گھر آفر

300<sup>+</sup> ft Height    50<sup>+</sup> Amenities    15<sup>+</sup> Lifts    36 Months Possession

800<sup>+</sup> Residential Units    200<sup>+</sup> Commercial Units    100% Shariah Compliant Investment    42 Months Payment Plan



### ⌚ 10 SECONDS FROM

- Winter Land
- Bahria School
- Food Court

### ⌚ 3 MINUTES FROM

- Bahria Hospital
- Eiffel Tower
- Grand Mosque
- Imtiaz Store

### ⌚ 5 MINUTES FROM

- Ring Road
- Raiwind Road
- Canal Road

### ⌚ 10 MINUTES FROM

- M2 Motorway
- Shaukat Khanum
- Thokar Niaz Baig

### ⌚ 30 MINUTES FROM

- International Airport
- Lahore Cantt

TALLEST TOWER OF LAHORE

Founded in 2014, ABS Developers (PVT.) Ltd. is Pakistan's first shariah-compliant real estate firm. With a dedication to transparency and high ROI, we excel in high-rise projects in Lahore, offering turnkey solutions. Our commitment to quality, innovation, and community impact propels us toward becoming the leading real estate service provider in the region.

"I would like to sincerely thank our valued members for your continued support in ensuring that we remain a leading property development & management company across Pakistan".

CEO ABS Developers (Pvt) Ltd.

*Dr. Subayya Ikram*



**PEARL ONE TOWER**  
 (PLOT #10-18, IQBAL BLOCK, BAHRIA TOWN, LAHORE)



**READY FOR POSSESSION**



**ABS MALL & RESIDENCY**  
 (PLOT # 1-4, GVR PHASE 1, BAHRIA TOWN, LAHORE)



**4 MONTHS RECORD BREAKING DEVELOPMENT**

**1** Million+ Sq. Ft  
 Planned  
 Projects

**16** +  
 Delivered  
 Projects

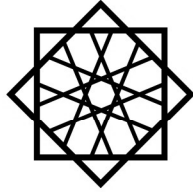
**10000** +  
 Satisfied  
 Clients

**100** %  
 Riba Free  
 Policy

**10000** +  
 Generated  
 Employment  
 Opportunities

**100** %  
 Shariah  
 Compliance

**100** %  
 On Time  
 Delivery



# PEARL ONE COURTYARD

## 50<sup>+</sup> Amenities

Explore luxury and innovation at Pearl One - Courtyard, Bahria Town Lahore's jewel. With 300+ units, a grand Jamia Mosque and the city's tallest building, enjoy seamless living in hotel-serviced apartments. Experience unmatched convenience with 24/7 services and 21+ amenities.

**23<sup>+</sup>** Floors

**300<sup>+</sup>** Ft Height

**500<sup>+</sup>** Residential Units

**15<sup>+</sup>** High Speed Elevators

**800<sup>+</sup>** Person Jamia Masjid

**1,000,000<sup>+</sup>** Sq Ft Area



**HIGH SPEED ELEVATORS**



**24/7 GROCERY SERVICE**



**24/7 ROOM SERVICE**



**INFINITY POOL**



**GYM**



**2MIN RING ROAD RAIWIND ROAD & MULTAN ROAD**



**FULLY AUTOMATED COMPLEX**



**FOOD COURTS**



**ROOFTOP GARDEN**



**HYPER MALL**



**AIRPORT 25 MIN**



**CITY CENTRE 10 MIN**

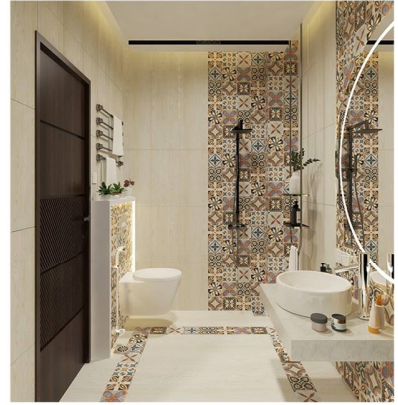


**10 MIN FROM M2 MOTORWAY**

# 1 BED APARTMENT - INTERIOR MODEL



**BED ROOM**



**WASH ROOM**



**BED ROOM**



**KITCHEN**

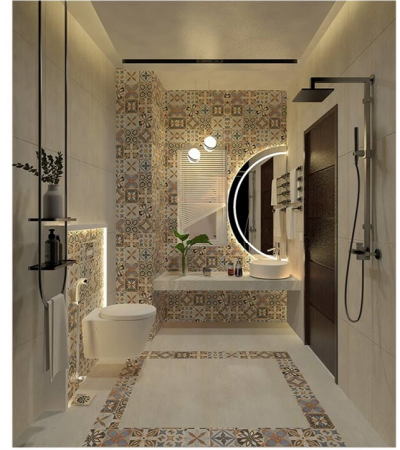


**LIVING ROOM**

## 2 BED APARTMENT - INTERIOR MODEL



**BED ROOM**



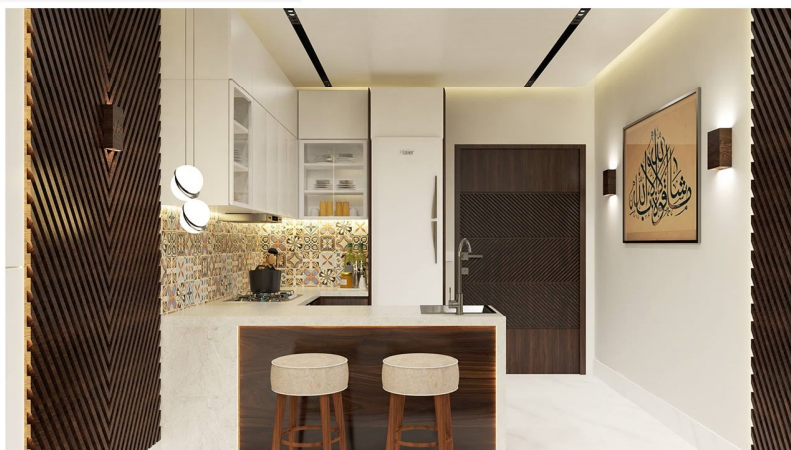
**WASH ROOM**



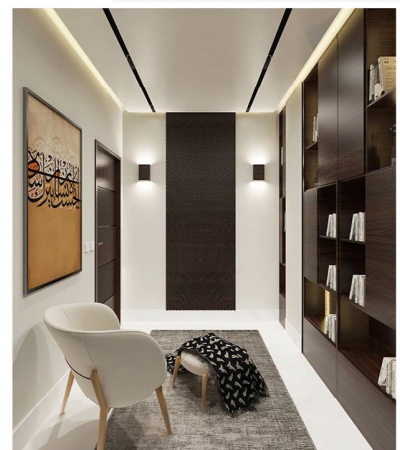
**WASH ROOM**



**LIVING ROOM**



**KITCHEN**

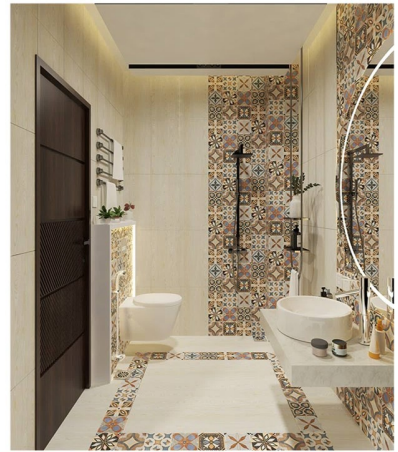


**STUDY ROOM**

## 3 BED APARTMENT - INTERIOR MODEL



**BED ROOM**



**WASH ROOM**



**BED ROOM**



**KITCHEN**



**DRAWING ROOM**



**LIVING ROOM**

# HAT TRICK LAUNCH

## آسان گھر آفر

**RS. 18000/- PER SQ. FT**

## RESIDENTIAL *Payment Plan*

### 1-BEDROOM APARTMENT (500 SQ. FT)

DOWN PAYMENT (PKR)	EVERY MONTH X 35 (PKR)	EVERY 6TH MONTH X 7 (PKR)	LAST PAYMENT (PKR)	GRAND TOTAL (PKR)
1,000,000	85,000 X 35	575,000 X 7	1,000,000	9,000,000

### 2-BEDROOM APARTMENT (800 SQ. FT)

DOWN PAYMENT (PKR)	EVERY MONTH X 35 (PKR)	EVERY 6TH MONTH X 7 (PKR)	LAST PAYMENT (PKR)	GRAND TOTAL (PKR)
1,500,000	125,000 X 35	1,000,000 X 7	1,525,000	14,400,000

### 2-BEDROOM APARTMENT (1000 SQ. FT)

DOWN PAYMENT (PKR)	EVERY MONTH X 35 (PKR)	EVERY 6TH MONTH X 7 (PKR)	LAST PAYMENT (PKR)	GRAND TOTAL (PKR)
1,500,000	170,000 X 35	1,285,000 X 7	1,555,000	18,000,000

#### NOTE:

- ALL AREAS ARE GROSS & APPROX.
- FRONT, CORNER, FRONT & COURTYARD & CATEGORIES WILL BE CHARGED.
- PAYMENT PLAN VALID SUBJECT TO AVAILABILITY OF UNITS.
- INSTALMENT PLAN STARTS FROM 1ST MARCH 2024.
- NO DISCOUNT ON FULL CASH PAYMENT.
- VALID TILL 10TH MARCH 2024.

